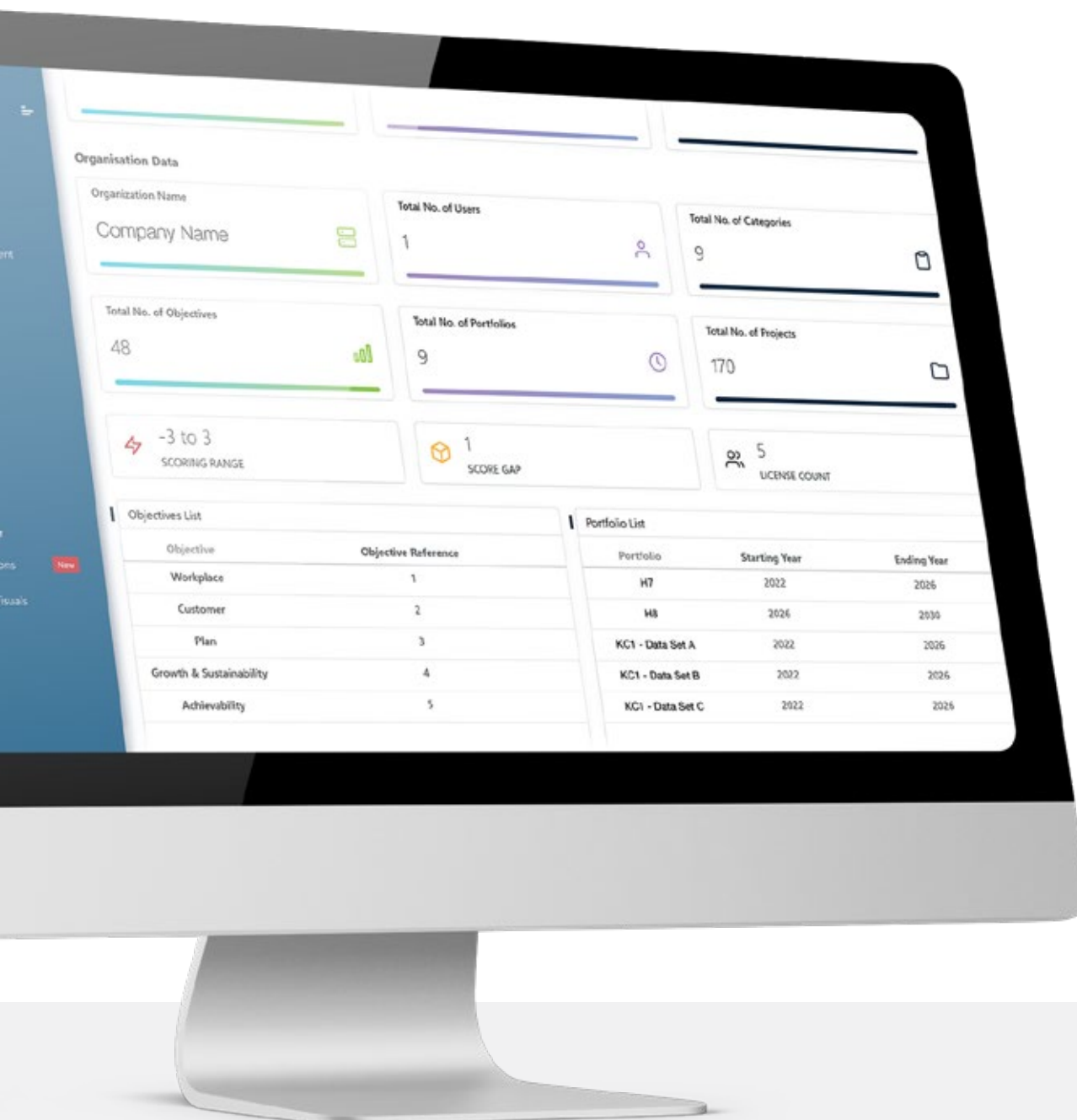


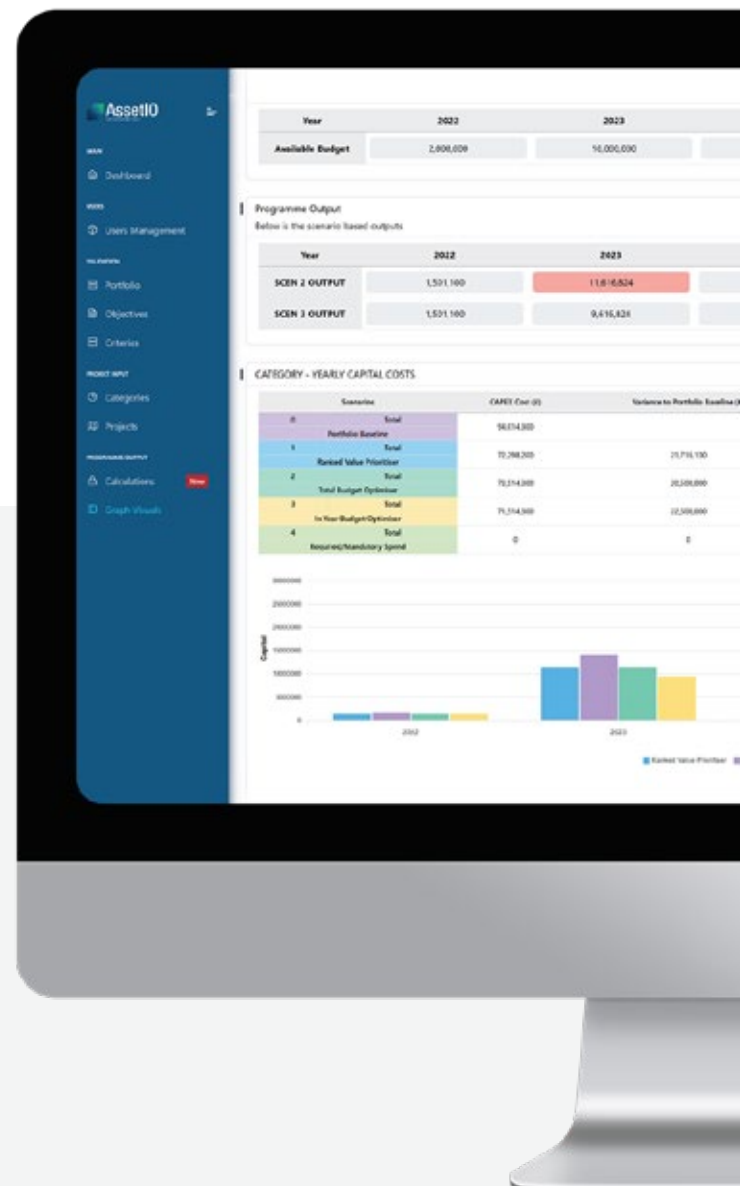
# Asset10

Powering values-based  
investment decision making



Many organizations the world over struggle to agree their capital investment plans in a way that is aligned to their organizational priorities. Often there is a complex array of multiple spreadsheets, using different data and decision-making criteria with limited administrative control.

The result is inefficient manual investment planning processes, and sub-optimal decision making which results in poorly targeted investment and reduced ROI. **AssetIO is different...**



~~Spreadsheets~~  
~~and Excel for~~  
~~investment~~  
~~planning~~



**AssetIO helps organizations move away from a complex array of multiple spreadsheets for investment planning and on to a single, easy to use web-based platform quickly.**

AssetIO utilizes a business value framework and strategic objectives to optimize the benefits of investment plans without the need for significant quantities of data and information. This makes it easier to use and quicker to develop and deploy when compared to other large scale enterprise level solutions which are more complex and rely upon a larger volume of data that simply does not exist in many organizations.



**Better alignment of investments with corporate level strategy and priorities**



**Provides additional flexibility and control over investment plans**



**Compare a wide variety of different investment needs using the same evaluation criteria**



**Support more informed discussions with industry regulators, asset owners and investors**



**Streamline investment planning processes. Produce better plans much more quickly**



**Make the best use of the data and information that you do have, not show what you don't have**



**Provide more structure, consistency and objectivity in investment decision-making**



**Greatly reduced deployment time, enabling the realization of benefits more quickly**



**Gain more transparency and confidence in investment decisions**



**Enables rapid progression to a more advanced approach which can be further built upon**

# Features



AssetIO utilizes a business value framework and strategic objectives to optimize the benefits of investment plans without the need for significant quantities of data and information. This makes it easier to use and quicker to develop and deploy when compared to other large scale enterprise level solutions which are more complex and rely upon a larger volume of data that simply does not exist in many organizations.



## Comprehensive Evaluation

AssetIO allows decision-makers to consider multiple factors simultaneously, including economic, social, environmental, and technical aspects. This comprehensive approach ensures a more holistic evaluation of alternatives.



## Quantitative & Qualitative Integration

Integrating both quantitative and qualitative information, AssetIO allows decision-makers to combine objective data with subjective outcomes.



## Transparency

The AssetIO process provides a transparent framework for decision-making by explicitly laying out the criteria used for evaluation and the weights assigned to them, fostering understanding and trust among stakeholders.



## Regulatory Submission

The structured framework used by AssetIO and the reporting outputs provide supporting data particularly beneficial for Regulatory Submission and discussion.



## Risk Management

By considering multiple criteria, AssetIO helps assess investment options, optimizing the outputs to meet specific needs, enabling the risks associated with different alternatives to be accounted for. This allows decision-makers to make more informed choices and mitigate potential negative impacts.



## Stakeholder Engagement

AssetIO encourages stakeholder involvement by considering diverse perspectives and interests in the decision-making process, leading to more inclusive and satisfactory outcomes.



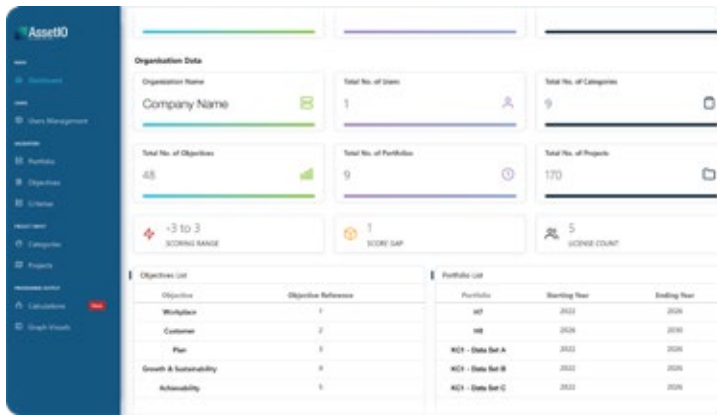
## Consistency & Objectivity

AssetIO provides a structured and systematic approach to decision-making, reducing the influence of biases and personal preferences. This promotes consistency and objectivity in the evaluation process.

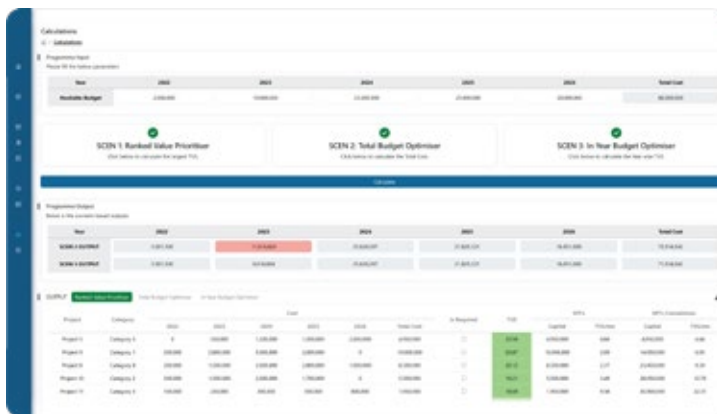


## Flexibility

The configuration options allow decision-makers to customize the value criteria and the specific value measure weightings based on the specific needs of the business, making it adaptable to the business needs and priorities.



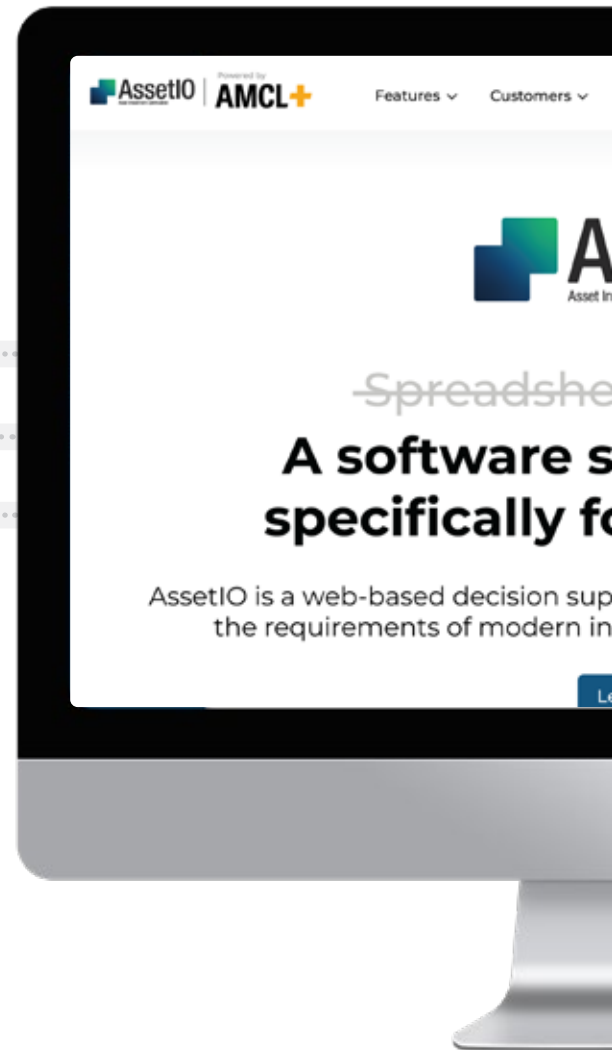
Investment Needs & Solutions Capture



Investment Priorities Setting



Optimized Investment Plans





# Case Studies



## Aviation Sector Client

Serving over 200 destinations globally, this major international airport acts as a gateway connecting the United Kingdom to the rest of the world. Consisting of 212 aircraft stands, over 80 million passengers travel through the airport each year, travelling on 80 different global airlines.

To begin with AMCL worked with the Investment Planning team to establish a multi-criteria cost-benefit investment prioritization framework. AMCL's investment planning tool was then configured to 'codify' the new prioritization framework into an easy to use structure and presentation. The organizations investment planning team trained were then how to use it the new tool.

Within a matter of days the investment planning team were able to run four different investment planning optimization scenarios within the new tool, the best one of which offered a 30% reduction in Capex Spend whilst retaining 89% of the benefits compared to the organization's legacy spreadsheet-based plan.

Earlier versions of AssetIO have helped leading infrastructure owner operators to prioritize their investment they need to make in their assets. The organizations below have been able to rapidly transition away from their existing legacy spreadsheet-based approaches and adopt multi-criteria constraint-based investment planning approach using the fundamental principles that underpin AssetIO.



## Water Sector Client

---

This national water company provides water and wastewater services to 1.6 million homes and 172,000 businesses. With investment in the companies asset portfolio under increasing scrutiny by the regulator, the organization sought to ensure that every investment decision is made with clear purpose and from a position of knowledge on the expected benefits outcomes.

AMCL established a view on the companies existing prioritization methodologies. A multi-criteria investment planning tool was then developed which presented the Value Framework in a simple yet effective way. The new tool was quickly adopted by the Investment Planning and Delivery teams.

As a result, the organization was now able to better prioritize its investments by incorporating additional factors which could not be expressed as a monetary value, or which were qualitative and could not be easily quantified. This enabled the organization to demonstrate greater transparency in its investment decision making to regulators and better value to its customers.



## Get in touch

---

To hear more about how AssetIO can help your organization or to book a demonstration with one of our AssetIO investment planning specialists contact us here at [solutions@amcl.com](mailto:solutions@amcl.com).

### Meet the Team



**Kris Westall**

Asset Investment Planning  
Global Service Line Lead



**Simon Smith**  
North America



**Grame Hind**  
UK&I and Europe



**Andrew Wilson**  
Asia-Pacific



**Steve Lamb**  
Middle East

---

 [www.amcl.com/assetio](http://www.amcl.com/assetio)

 [linkedin.com/company/amcl](https://linkedin.com/company/amcl)

Spreadsheets  
and Excel for  
investment  
planning



## Get in touch

---

To hear more about how AssetIO can help your organization or to book a demonstration with one of our AssetIO investment planning specialists contact us here at [solutions@amcl.com](mailto:solutions@amcl.com).

### Meet the Team



**Kris Westall**

Asset Investment Planning  
Global Service Line Lead



**Simon Smith**  
North America



**Grame Hind**  
UK&I and Europe



**Andrew Wilson**  
Asia-Pacific



**Steve Lamb**  
Middle East

---

 [www.amcl.com/assetio](http://www.amcl.com/assetio)

 [linkedin.com/company/amcl](https://www.linkedin.com/company/amcl)

Spreadsheets  
and Excel for  
investment  
planning